

HOW TO

Use the Full Viewer the First Time



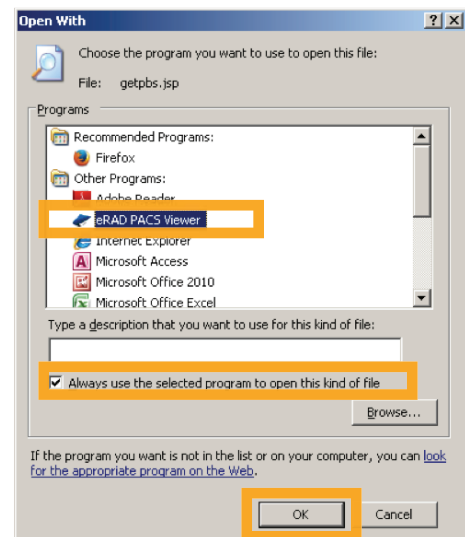
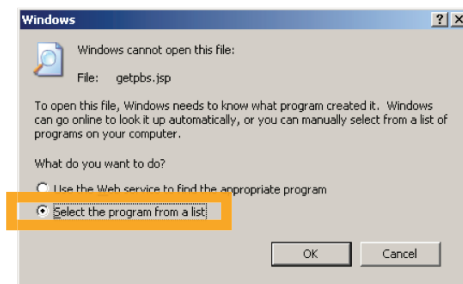
Microsoft Internet Explorer

When launching images in the full viewer for the first time, you should not see an issue unless the user is on Windows 7 or Windows 8. If you receive any errors on launch, simply reboot the PC and launch a study again.

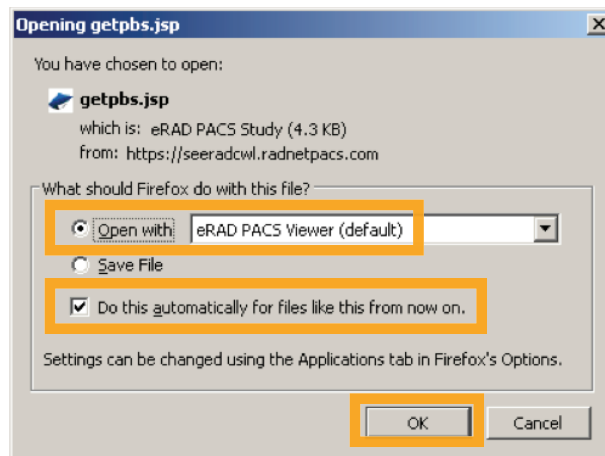


Mozilla Firefox

When launching the first time through Firefox, you will receive a prompt to select which program to open the file type. Click "Select the program from a list", and then click "eRAD PACS Viewer", check "Always use the selected program to open this kind of file", and click OK.



You may see a window that looks slightly different, but is handled the same way. Open with "eRAD PACS Viewer (default)", which should already be selected, then check "do this automatically for files like this from now on."





Google **Chrome**

When opening a study for the first time, you will see a small download box in the lower left of the screen. Right click on this box and select "Always open files of this type". Then reopen the file. You may also see the same prompts that you receive in Firefox. If so, follow the same process.

