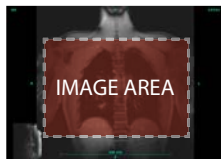


The eRAD Web Image Viewer provides many different features to view and manipulate images. Most features are "location-sensitive"—available only when you click or drag on specific edges or areas of the screen.



Toggle Pop-Up Help  
**Double-Click Icon**

Double-click the Help Icon to turn on/off pop-up help that automatically shows available features where ever you hover the cursor.



## Image Area Controls



Pan  
**Click+Drag**



Zoom  
**Left & Right-Click  
+ Drag**



Window Level  
**Right-Click + Drag**



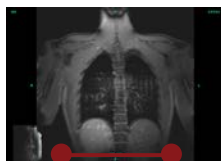
Scroll  
**Scroll Wheel or  
Middle-Click + Drag**



Reset Image  
**Double-Click**



Invert Window Level  
**Right-Double-Click**



RULER AT BOTTOM

## Ruler Controls



Place Endpoint  
**Click+Drag Terminal**



Reset Ruler  
**Double-Click Ruler**



Quick Measure  
**Click Ruler, then  
Click + Drag**

# Edge and Corner Controls

