

eRAD Web Image Viewer

The eRAD Web Image Viewer provides many different features to view and manipulate images. Most features are "location-sensitive"—available only when you click or drag on specific edges or areas of the screen.



Toggle Pop-Up Help
Double-Click Icon

Double-click the Help Icon to turn on/off pop-up help that automatically shows available features where ever you hover the cursor.

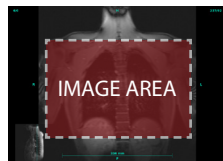


Image Area Controls



Pan
Click+Drag



Zoom
**Left & Right-Click
+ Drag**



Window Level
Right-Click + Drag



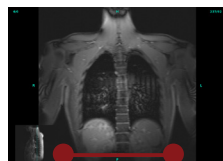
Scroll
**Scroll Wheel or
Middle-Click + Drag**



Reset Image
Double-Click



Invert Window Level
Right-Double-Click



RULER AT BOTTOM

Ruler Controls



Place Endpoint
Click+Drag Terminal



Reset Ruler
Double-Click Ruler



Quick Measure
**Click Ruler, then
Click + Drag**

Edge and Corner Controls

